

# The Daily

May 30, 2024





| DOMESTIC INDICES |       |        |          |
|------------------|-------|--------|----------|
|                  | CLOSE | POINTS | % CHANGE |
| SENSEX           | 74503 | -668   | -0.89    |
| NIFTY            | 22705 | -183   | -0.80    |
| MIDCAP           | 43352 | -163   | -0.38    |
| SMALL CAP        | 47543 | 109    | 0.23     |

| SECTORAL INDICES   |       |        |          |
|--------------------|-------|--------|----------|
|                    | CLOSE | POINTS | % CHANGE |
| HEALTHCARE         | 35671 | 108    | 0.31     |
| POWER              | 7627  | 19     | 0.24     |
| METAL              | 33184 | 59     | 0.18     |
| CG                 | 69741 | 103    | 0.15     |
| CD                 | 55771 | -83    | -0.15    |
| AUTO               | 53933 | -164   | -0.30    |
| TECK               | 16054 | -95    | -0.59    |
| REALTY             | 7852  | -69    | -0.88    |
| IT                 | 34204 | -317   | -0.92    |
| OIL & GAS          | 28726 | -275   | -0.95    |
| FINANCIAL SERVICES | 10633 | -142   | -1.32    |
| BANKEK             | 55311 | -769   | -1.37    |

| BSE 200 GAINERS/LOSERS |      |            |       |
|------------------------|------|------------|-------|
| GAINERS                | %    | LOSERS     | %     |
| UNOMINDA               | 5.43 | ICICIPRULI | -4.41 |
| PAYTM                  | 4.99 | BAYERCROP  | -4.10 |
| MOTHERSON              | 3.98 | INDIGO     | -4.03 |
| HINDALCO               | 3.64 | LODHA      | -3.89 |
| JUBLFOOD               | 2.93 | IRCTC      | -3.67 |

| ADVANCE/DECLINES |      |    |
|------------------|------|----|
|                  | BSE  | %  |
| ADVANCES         | 1623 | 41 |
| DECLINES         | 2207 | 56 |
| UNCHANGED        | 99   | 3  |

| INSTITUTIONAL ACTIVITY |            |            |           |
|------------------------|------------|------------|-----------|
| Rs Cr                  | 29-05-2024 | 28-05-2024 | MAY TOTAL |
| FII                    | -5842      | 66         | -42945    |
| DII                    | 5234       | 3232       | 56666     |

## Indian markets could open lower, in line with mostly lower Asian markets today and negative US markets on May 29

Major U.S. stock indexes ended lower as Treasury yields climbed to four-week highs on Wednesday, leaving the S&P 500 and Nasdaq down for the first time in three straight sessions. Two-, 10- and 30-year Treasury rates finished at their highest levels in about a month on Wednesday, as long-dated government debt sold off for a second straight day on a trio of poorly received auctions. The 2-, 10- and 30-year yields finished at 4.983% (up 2 bps), 4.623% (up 7 bps) and 4.742%, respectively. The US sold \$44 billion in seven-year notes at 4.650% — above the pre-auction level of 4.637%. That’s just a day after two other offerings totaling \$139 billion saw lackluster demand.

A U.S. Federal Reserve survey known as the Beige Book showed economic activity continued to expand from early April through mid-May but firms grew more cautious about the future amid weakening consumer demand while inflation continued to increase at a modest pace.

Asian stocks fell Thursday, emulating declines in the US, after another weak sale of Treasuries reinforced concerns about the impact of higher yields. as the deepening rout in global bond markets impacts risk appetite.

Nifty continued falling for the fourth consecutive day on May 29 and recorded its biggest fall in 14 sessions. At close, Nifty was down 0.80% or 183.5 points at 22704.7. Nifty fell with a downgap on May 29 and closed near the day’s low. The support of 22795 has been breached. Nifty could now head towards 22520 while 22859 could offer resistance on upmoves in the near term.

## Mazagon Dock Shipbuilders Ltd. (MDL) Q4FY24 results key takeaway

**Reported numbers:** MDL numbers were above expectations in Q4FY24. Its consolidated revenue grew by 49.3% YoY to Rs 3103.4 crore in Q4FY24.

The company’s EBITDA stood at Rs 524 crore vs. Rs 292 crore in Q4FY23 and EBITDA margin was at 16.9% in Q4FY24 vs. 14% in Q4FY23.

Net profit grew by 103.3% YoY, stood at Rs 663 crore in Q4FY24, supported by higher other income. Other Income increased to Rs 376 crore in Q4FY24 vs. Rs 232 crore in Q4FY23. Net profit margin was at 21.4% in Q4FY24 vs. 15.7% in Q4FY23.



| GLOBAL INDICES |        |          |          |
|----------------|--------|----------|----------|
|                | CLOSE  | POINTS   | % CHANGE |
| DOW JONES      | 38442  | -411.32  | -1.06    |
| S & P 500      | 5267   | -39.09   | -0.74    |
| NASDAQ         | 18737  | -132.69  | -0.70    |
| FTSE           | 8183   | -71.11   | -0.86    |
| CAC            | 7935   | -122.77  | -1.52    |
| DAX            | 18475  | -202.99  | -1.09    |
| NIKKEI         | 37786  | -735.50  | -1.91    |
| SHANGHAI       | 3111   | -0.28    | -0.01    |
| HANG SENG      | 18477  | -344.15  | -1.83    |
| BOVESPA        | 122707 | -1072.00 | -0.87    |

| EXCHANGE RATES |       |          |
|----------------|-------|----------|
|                | VALUE | % CHANGE |
| USD/INR        | 83.4  | 0.20     |
| EURO/USD       | 1.080 | 0.02     |
| USD/GBP        | 1.270 | -0.06    |
| USD/JPY        | 157.4 | -0.11    |

| COMMODITIES             |        |          |
|-------------------------|--------|----------|
|                         | VALUE  | % CHANGE |
| GOLD (\$ / Oz)          | 2338.5 | -0.12    |
| SILVER (\$ / Oz)        | 32.2   | -0.43    |
| CRUDE OIL FUTURES       | 79.3   | 0.13     |
| BRENT OIL (\$ / Barrel) | 83.5   | 0.16     |

| BOND YIELD            |       |            |
|-----------------------|-------|------------|
|                       | VALUE | ABS CHANGE |
| IND10 YEAR BOND YIELD | 7.01  | 0.13       |

| ADR            |       |          |
|----------------|-------|----------|
|                | VALUE | % CHANGE |
| DR REDDY'S LAB | 70.5  | -0.58    |
| HDFC BANK      | 57.0  | -1.33    |
| ICICI BANK     | 26.4  | -1.60    |
| TATA MOTORS    | 25.1  | 0.00     |
| WIPRO          | 5.3   | -2.05    |
| VEDANTA LTD    | 16.5  | 0.00     |
| INFOSYS        | 17.0  | -1.67    |

**Earnings and valuation:** Earnings per share was at Rs 32.9 in Q4FY24, Rs 96.1 in FY24, and Rs 55.5 in FY23. At a CMP of Rs 2180, stock is trading at 21.1x FY26E EPS.

### Ahluwalia Contacts Ltd. (ACL) Q4FY24 results key takeaway

**Reported numbers:** ACL numbers in Q4FY24 was above expectations. However, margins slipped. Its consolidated revenue stood at Rs 1164 crore in Q4FY24, reported revenue growth was at 34.8% YoY.

The company's EBITDA stood at Rs 104 crore, reported EBITDA de growth was at 5.4% YoY, impacted by higher raw material and sub contracts cost. EBITDA margin was at 9% in Q4FY24 vs. 12.8% in Q4FY23.

The company's net profit grew by 182.8% YoY basis to Rs 199.8 crore in Q4FY24, supported by exceptional gain a sum of Rs 195 crore, related to arbitration recovery and net of GST.

**Earnings and valuation:** Earnings per share was at Rs 29.8 in Q4FY24, Rs 56.01 in FY24, and Rs 29 in FY23. At a CMP of Rs 1357, stock is trading at 22x FY26E EPS.

### Power Mech Projects bags order worth Rs 563 crore to construct nuclear power plant from BHEL

Power Mech Projects has bagged an order worth Rs 563 crore from state-owned BHEL to construct a nuclear power plant. The Power Mech Projects Ltd (PMPL) has secured its first construction project in the critical nuclear power sector.

### India's natural gas demand to rise 7% in 2024

Natural gas demand in India is likely to grow 7% in 2024 owing to higher usage in the industrial and fertiliser sectors, International Energy Agency said. Heatwaves across the South Asian country will also drive up usage from the power sector, but total growth in natural gas use is expected to be slightly lower in 2023, when it grew nearly 10%, the agency added.

### Man Industries gets new orders worth Rs 490 cr

Man Industries has secured new orders worth Rs 490 crore in the domestic and international markets. With the latest win, the order book stands around Rs 2,600 crore. The new orders worth Rs 490 crore are from both domestic and international clients, and are scheduled for delivery in the next six months.



### **Reliance Retail plans 30-minute delivery model for quick commerce re-entry**

Reliance Industries' retail arm, Reliance Retail will not compete with Blinkit and Zepto with a 10-minute delivery model for its proposed re-entry into quick commerce venture next month.

### **Tata Steel to invest \$2.11 bn in Singapore unit to repay overseas debt, fund UK transition**

Tata Steel Ltd will invest Rs 17,408 crore (\$2.11 billion) in its Singapore unit, T Steel Holdings Pte Ltd, to fund the restructuring of its struggling UK business as well as repay the debt of its offshore entities.

### **Tata Steel's board approves Rs 3,000 crore fundraising via NCDs**

Tata Steel's board of directors approved a plan to raise funds through the issuance of additional debt securities. The company plans to raise up to Rs 3,000 crore by issuing non-convertible debentures (NCDs) in one or more tranches on a private placement basis. The decision was made after a review of the steelmaker's financing plan. As of March 31, 2024, the company's net debt stands at Rs 77,550 crore.

### **Inox Wind Energy raises Rs 900 crore through stake sale to trim debt**

Inox Wind Energy has raised Rs 900 crore through equity share sale of Inox Wind Ltd, a subsidiary of the INOXGFL Group. It is a significant step towards completely deleveraging external debt in Inox Wind Ltd.

### **Suzlon Group gets 551 MW wind energy project from Aditya Birla Group**

Suzlon Group has secured an order for a 551.25 MW wind power project from Aditya Birla Group. The order is to be executed across two sites in Rajasthan and Gujarat. While 368.55 MW will be developed by Suzlon in the Barmer district of Rajasthan, another 182.70 MW will be developed at the site by the client in the Bhuj district of Gujarat.

### **HCLTech infuses GenAI into MRO solution to drive enterprises' asset utilisation**

HCLTech has added generative AI or GenAI capabilities to its Maintenance, Repair and Overhaul (MRO) solution, to help optimise enterprises' asset utilisation. The infusion of GenAI into its MRO solution -- iMRO/4 -- would help enterprises raise the performance and efficiency of complex, high-value assets in transportation, technology, energy, aerospace and defense.

### **Important news/developments to influence markets**

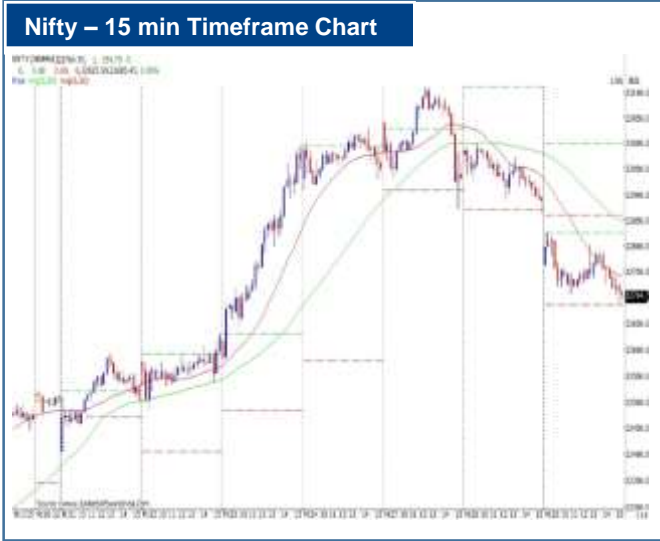
#### **German inflation higher than expected ahead of ECB rates decision**

German inflation rose slightly more than forecast to 2.8% in May, although economists said an increase had been expected and should not alarm European Central Bank policymakers ahead of their interest rate decision next week.



| Index          | Short term trend | Target | Reversal | CMP     | S1-S2       | R1-R2       |
|----------------|------------------|--------|----------|---------|-------------|-------------|
| Nifty Fut      | <b>DOWN</b>      | 22560  | 22874    | 22743.8 | 22683-22560 | 22874-23023 |
| Bank Nifty Fut | <b>DOWN</b>      | 48301  | 49411    | 49011.2 | 48716-48301 | 49411-49820 |

## Daily Technical View on Nifty



### Market: Observation

Markets corrected further on Wednesday after gap down opening. Nifty lost 183.45 points or 0.8% to close at 22,704.7. Broad market indices like BSE Small Cap gained, thereby outperforming Sensex/Nifty. Market breadth was negative on BSE/NSE.

### Nifty: Caution warranted for very near term

On the 15 min chart, we can observe that Nifty opened with a down gap and after a brief pullback, gradually came lower and ended near lows of the day. We also observe that 20 period MA remains below the 50 period MA indicating the negative moving average crossover is intact. This indicates that one needs to be cautious for the very near term until the Nifty can take out the immediate resistances of 22826-22999.



### Nifty: Uptrend has weakened

On the Daily chart, uptrend has weakened. Wednesday's negative closing has led to the Nifty closing below the previous swing high of 22795. Nifty nevertheless continues to hold above the 20 and 50 day SMA. 14-day RSI at 56.57 is falling and has now moved below its 9 day EMA. This indicates that momentum is weakening.

Further downsides are now likely once the immediate support of 22685 is broken. Immediate resistance is now at 22826. Markets are likely to be volatile in the coming sessions as we approach the Election result announcement.

Sectorally, except for the Media and Pharma indices, most of the sectoral indices are now correcting.



## OPEN SHORT TERM TRADING CALLS

| NO. | RECO DT.  | RECO | COMPANY NAME                | ENTRY        | CMP     | SL      | TARGET | UPSIDE % | VALID TILL |
|-----|-----------|------|-----------------------------|--------------|---------|---------|--------|----------|------------|
| 1   | 21-MAY-24 | BUY  | PVR INOX MAY FUT            | 1347.05-1332 | 1,338.0 | 1,319.0 | 1405   | 5.0      | 4-JUN-24   |
| 2   | 24-MAY-24 | BUY  | CHAMBAL FERTILIZERS JUN FUT | 396-411      | 405.4   | 390.0   | 440    | 8.5      | 7-JUN-24   |
| 3   | 21-MAY-24 | BUY  | RAIN                        | 166-169.30   | 167.7   | 163.5   | 182    | 8.5      | 4-JUN-24   |

## OPEN E-MARGIN POSITIONAL CALLS

| NO. | RECO DT.  | RECO | COMPANY NAME              | ENTRY        | CMP    | SL     | TARGET 1 | TARGET 2 | UPSIDE % | VALID TILL |
|-----|-----------|------|---------------------------|--------------|--------|--------|----------|----------|----------|------------|
| 1   | 5-APR-24  | BUY  | BALRAMPUR CHINI           | 387.35-374   | 383.7  | 360.9  | 419.0    | 449.0    | 17       | 5-JUN-24   |
| 2   | 8-APR-24  | BUY  | GODREJ PROPERTIES*        | 2603-2490    | 2758.4 | 2603.0 | 2860.0   | 3020.0   | 9        | 8-JUN-24   |
| 3   | 26-APR-24 | BUY  | COROMANDEL INTERNATIONAL* | 1179.10-1135 | 1287.9 | 1179.1 | 1264.0   | 1359.0   | 6        | 26-JUN-24  |
| 4   | 7-MAY-24  | BUY  | TECH MAHINDRA             | 1284.50-1240 | 1286.5 | 1215.0 | 1380.0   | 1478.0   | 15       | 7-JUL-24   |
| 5   | 15-MAY-24 | BUY  | GUJARAT ALKALI            | 783-728      | 777.2  | 713.0  | 869.0    | 893.0    | 15       | 15-AUG-24  |
| 6   | 16-MAY-24 | BUY  | AMI ORGANICS              | 1170-1240    | 1255.8 | 1145.0 | 1333.0   | 1420.0   | 13       | 16-AUG-24  |
| 7   | 21-MAY-24 | BUY  | NHPC                      | 102.85-98.25 | 101.6  | 96.5   | 110.2    | 118.5    | 17       | 21-JUL-24  |
| 8   | 21-MAY-24 | BUY  | RAILTEL                   | 414-425      | 415.9  | 405.0  | 465.0    | 490.0    | 18       | 21-AUG-24  |
| 9   | 22-MAY-24 | BUY  | BRITANNIA                 | 5217.70-4957 | 5229.8 | 4905.0 | 5583.0   | 5650.0   | 8        | 22-JUL-24  |
| 10  | 22-MAY-24 | BUY  | CIE AUTOMOTIVE            | 526.90-505   | 539.5  | 495.0  | 574.0    | 620.0    | 15       | 22-AUG-24  |

\*= 1st Target Achieved





## QUARTERLY RESULTS ANNOUNCED

| COMPANY             | Q4FY24        |            | YOY (%) |       | QOQ (%) |       | REMARK                  |
|---------------------|---------------|------------|---------|-------|---------|-------|-------------------------|
|                     | SALES (RS CR) | NP (RS CR) | SALES   | NP    | SALES   | NP    |                         |
| Mazagon Dock        | 3103.7        | 663.0      | 49.3    | 103.2 | 31.4    | 5.8   | Above Expectations      |
| Ahluwalia Contracts | 1163.7        | 199.9      | 34.8    | 176.8 | 13.4    | 182.8 | Above Expectations      |
| FDC Ltd.            | 462           | 46.3       | 6.3     | 50.8  | 1.0     | -41.8 | Lower than expectations |
| Kovai Medical       | 321           | 52.2       | 20.3    | 71.0  | 0.1     | -1.8  | In-line with estimates  |
| HCG                 | 495           | 21.3       | 12.0    | 153.6 | 5.3     | 273.0 | In-line with estimates  |
| Alkem Laboratories  | 2936          | 293.5      | 1.1     | 313.4 | -11.7   | -33.8 | Lower than expectations |
| Ipca Laboratories   | 2033          | 59.6       | 34.5    | -22.1 | -1.0    | -66.7 | Lower than expectations |

**Disclaimer:**

This report has been prepared by HDFC Securities Ltd and is solely for information of the recipient only. The report must not be used as a singular basis of any investment decision. The views herein are of a general nature and do not consider the risk appetite or the particular circumstances of an individual investor; readers are requested to take professional advice before investing. Nothing in this document should be construed as investment advice. Each recipient of this document should make such investigations as they deem necessary to arrive at an independent evaluation of an investment in securities of the companies referred to in this document (including merits and risks) and should consult their own advisors to determine merits and risks of such investment. The information and opinions contained herein have been compiled or arrived at, based upon information obtained in good faith from sources believed to be reliable. Such information has not been independently verified and no guaranty, representation of warranty, express or implied, is made as to its accuracy, completeness or correctness. All such information and opinions are subject to change without notice. Descriptions of any company or companies or their securities mentioned herein are not intended to be complete. HSL is not obliged to update this report for such changes. HSL has the right to make changes and modifications at any time.

This report is not directed to, or intended for display, downloading, printing, reproducing or for distribution to or use by, any person or entity who is a citizen or resident or located in any locality, state, country or other jurisdiction where such distribution, publication, reproduction, availability or use would be contrary to law or regulation or what would subject HSL or its affiliates to any registration or licensing requirement within such jurisdiction.

If this report is inadvertently sent or has reached any person in such country, especially, United States of America, the same should be ignored and brought to the attention of the sender. This document may not be reproduced, distributed or published in whole or in part, directly or indirectly, for any purposes or in any manner.

Foreign currencies denominated securities, wherever mentioned, are subject to exchange rate fluctuations, which could have an adverse effect on their value or price, or the income derived from them. In addition, investors in securities such as ADRs, the values of which are influenced by foreign currencies effectively assume currency risk. It should not be considered to be taken as an offer to sell or a solicitation to buy any security.

This document is not, and should not, be construed as an offer or solicitation of an offer, to buy or sell any securities or other financial instruments. This report should not be construed as an invitation or solicitation to do business with HSL. HSL may from time to time solicit from, or perform broking, or other services for, any company mentioned in this mail and/or its attachments.

HSL and its affiliated company(ies), their directors and employees may; (a) from time to time, have a long or short position in, and buy or sell the securities of the company(ies) mentioned herein or (b) be engaged in any other transaction involving such securities and earn brokerage or other compensation or act as a market maker in the financial instruments of the company(ies) discussed herein or act as an advisor or lender/borrower to such company(ies) or may have any other potential conflict of interests with respect to any recommendation and other related information and opinions.

HSL, its directors, analysts or employees do not take any responsibility, financial or otherwise, of the losses or the damages sustained due to the investments made or any action taken on basis of this report, including but not restricted to, fluctuation in the prices of shares and bonds, changes in the currency rates, diminution in the NAVs, reduction in the dividend or income, etc.

HSL and other group companies, its directors, associates, employees may have various positions in any of the stocks, securities and financial instruments dealt in the report, or may make sell or purchase or other deals in these securities from time to time or may deal in other securities of the companies / organizations described in this report. As regards the associates of HSL please refer the website.

HSL or its associates might have managed or co-managed public offering of securities for the subject company or might have been mandated by the subject company for any other assignment in the past twelve months.

HSL or its associates might have received any compensation from the companies mentioned in the report during the period preceding twelve months from the date of this report for services in respect of managing or co-managing public offerings, corporate finance, investment banking or merchant banking, brokerage services or other advisory service in a merger or specific transaction in the normal course of business.





HSL or its analysts did not receive any compensation or other benefits from the companies mentioned in the report or third party in connection with preparation of the research report. Accordingly, neither HSL nor Research Analysts have any material conflict of interest at the time of publication of this report. Compensation of our Research Analysts is not based on any specific merchant banking, investment banking or brokerage service transactions. HSL may have issued other reports that are inconsistent with and reach different conclusion from the information presented in this report. Research entity has not been engaged in market making activity for the subject company. Research analyst has not served as an officer, director or employee of the subject company. We have not received any compensation/benefits from the subject company or third party in connection with the Research Report.

Please note that HDFC Securities has a proprietary trading desk. This desk maintains an arm's length distance with the Research team and all its activities are segregated from Research activities. The proprietary desk operates independently, potentially leading to investment decisions that may deviate from research views.

HDFC securities Limited, I Think Techno Campus, Building - B, "Alpha", Office Floor 8, Near Kanjurmarg Station, Opp. Crompton Greaves, Kanjurmarg (East), Mumbai 400 042 Phone: (022) 3075 3400 Fax: (022) 2496 5066

Compliance Officer: Murli V Karkera Email: [complianceofficer@hdfcsec.com](mailto:complianceofficer@hdfcsec.com) Phone: (022) 3045 3600

For grievance redressal contact Customer Care Team Email: [customercare@hdfcsec.com](mailto:customercare@hdfcsec.com) Phone: (022) 3901 9400

HDFC Securities Limited, SEBI Reg. No.: NSE, BSE, MSEI, MCX: INZ000186937; AMFI Reg. No. ARN: 13549; PFRDA Reg. No. POP: 11092018; IRDA Corporate Agent License No.: CA0062; SEBI Research Analyst Reg. No.: INH000002475; SEBI Investment Adviser Reg. No.: INA000011538; CIN - U67120MH2000PLC152193

Investment in securities market are subject to market risks. Read all the related documents carefully before investing.

Mutual Funds Investments are subject to market risk. Please read the offer and scheme related documents carefully before investing.

Registration granted by SEBI, membership of BASL (in case of IAs) and certification from NISM in no way guarantee performance of the intermediary or provide any assurance of returns to investors.